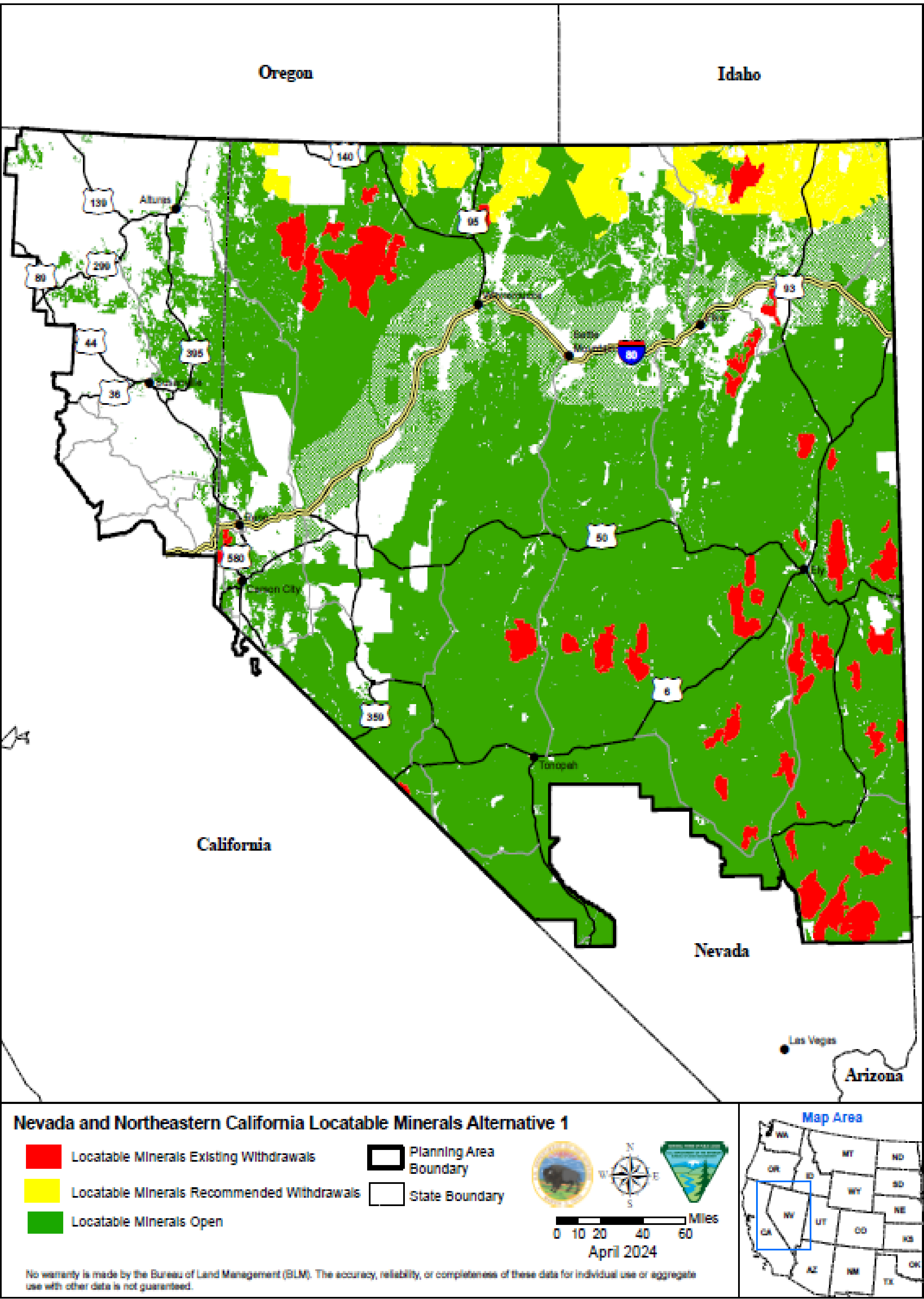


Alternative 1  
Current Management

LOCATABLE MINERALS

Alternative 5  
Preferred



**Saleable Mineral Materials**

Under all Alternatives, Saleable Materials are Closed in PHMA. Under all Alternatives except 3, Saleable Materials are open for new free use permits and expansion of existing pits. Specific criteria for free use and expansion are included in Alternatives 2, 4, 5 & 6. See Chapter 2, Table 2-4 in the DEIS.

